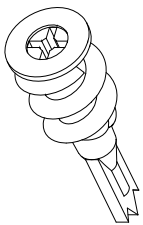
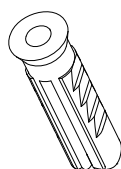
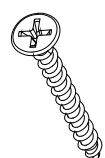
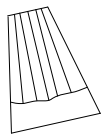


#### Installation Precaution:

1. Please read through the instructions thoroughly before installation;
2. Luminaries are ceiling surface mounted. Please do not cover insulation and combustibles around the luminary and the bulb to avoid causing a fire;
3. Installation should be performed by a qualified electrician;
4. To avoid the risk of electric shock, make sure the power is turned off before installing and maintaining the luminary;
5. For indoor installation use only (not for use in humid environments);
6. Do not install the fixture on an unstable or unstable skylight to prevent the fixture from falling;
7. Please keep this instruction manual properly for use as needed.

#### Luminaries Installation

1. Confirm that the ceiling is sufficiently sturdy and capable of bearing the weight of the luminaries;
2. Remove the accessory bag from the product and refer to the parts shown in the accessory bag in the figure on the right.

	A	B	C	D
Accessory kit	 <p>Large-size Plastic Gecko Quantity: 2 pcs</p>	 <p>Small-size Plastic Gecko Quantity: 2 pcs</p>	 <p>Setscrew Quantity: 2 pcs</p>	 <p>Wiring Caps With 0-10V function: 5 pcs Other function: 3 pcs</p>

3. Wire and install the ceiling tray as shown in the diagram below.

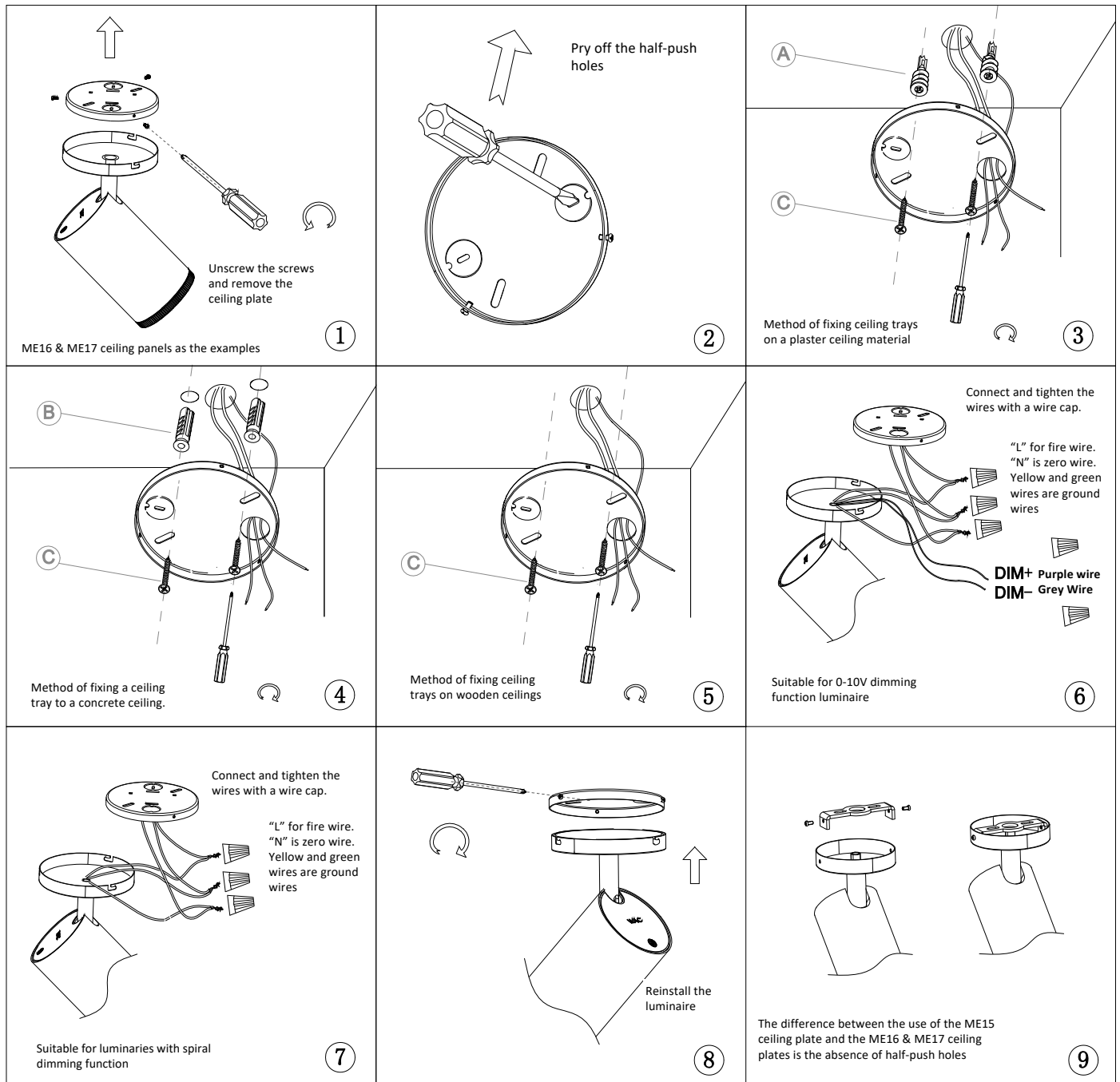
Authorized by WAC Lighting Corporation, USA, holder of the "WAC" trademark.

China Marketing Headquarters: WAC Lighting Technology (Shanghai) Co.

Address: Room 102, No. 14, Lane 299, Bisheng Road, Pilot Free Trade Zone, Shanghai (201204), P.R.C.

China Factory: Manufactured WAC Lighting(Dongguan)Co.,Ltd

Address: No. 390, Qingfeng Road, Qingxi Town, Dongguan City, Guangdong Province, 523653, P.R. China



Authorized by WAC Lighting Corporation, USA, holder of the "WAC" trademark.

China Marketing Headquarters: WAC Lighting Technology (Shanghai) Co.

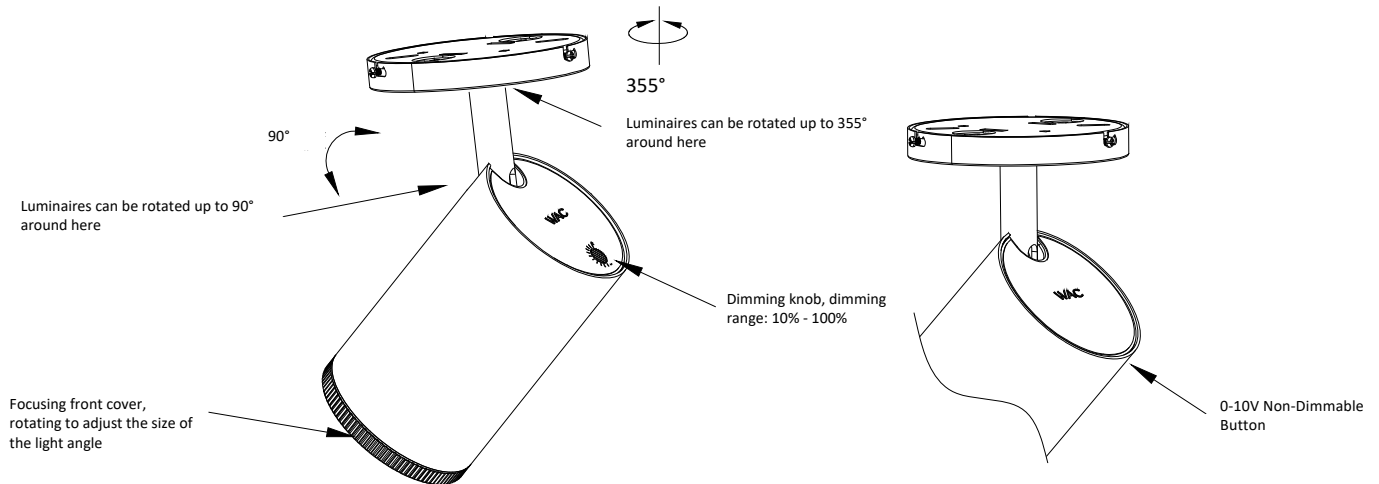
Address: Room 102, No. 14, Lane 299, Bisheng Road, Pilot Free Trade Zone, Shanghai (201204), P.R.C.

China Factory: Manufactured WAC Lighting(Dongguan)Co.,Ltd

Address: No. 390, Qingfeng Road, Qingxi Town, Dongguan City, Guangdong Province, 523653, P.R. China

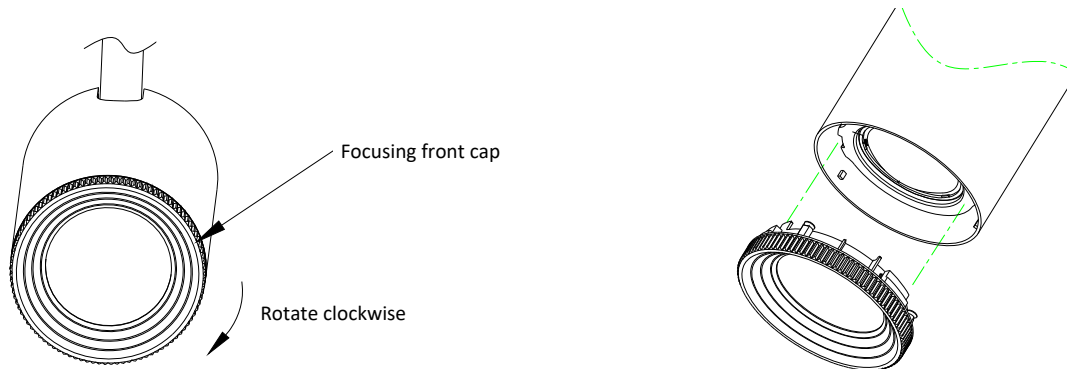
#### Fixture Adjustment:

1. The luminaires can be rotated horizontally by 355 ° and vertically by 90 °, as illustrated in the diagram below;
2. Luminaire with knob dimming function can be adjusted by rotating the rear cover dimming knob to adjust the brightness of the luminaire, dimming range: 10%-100%;
3. Luminaires with 0-10V dimming function, no dimming knob, purple-gray dimming light in the ceiling tray;
4. Rotate the focusing front cover to adjust the size of the light output angle.



#### Installation of Accessories ( Accessories purchased separately).

1. Turn the front cover clockwise, stop turning at the “click” sound, and remove the front cover from the lamp (as shown in the figure below).



2. After replacing the glass or other fittings into it, align the ears of the focusing front cover with the notch of the focusing assembly inside the lamp body and install it, then rotate it counterclockwise to the required spot size to complete the installation of the fittings. (The 3 bumps on the lamp body need to be matched with the 3 notches on the focusing front cover to fit in.)

Note: Once the adjustable front cover is in place, turn it counterclockwise and hear a “click” to indicate that the cover is properly installed. Simply tucking the adjustable front cover in place will risk falling off.

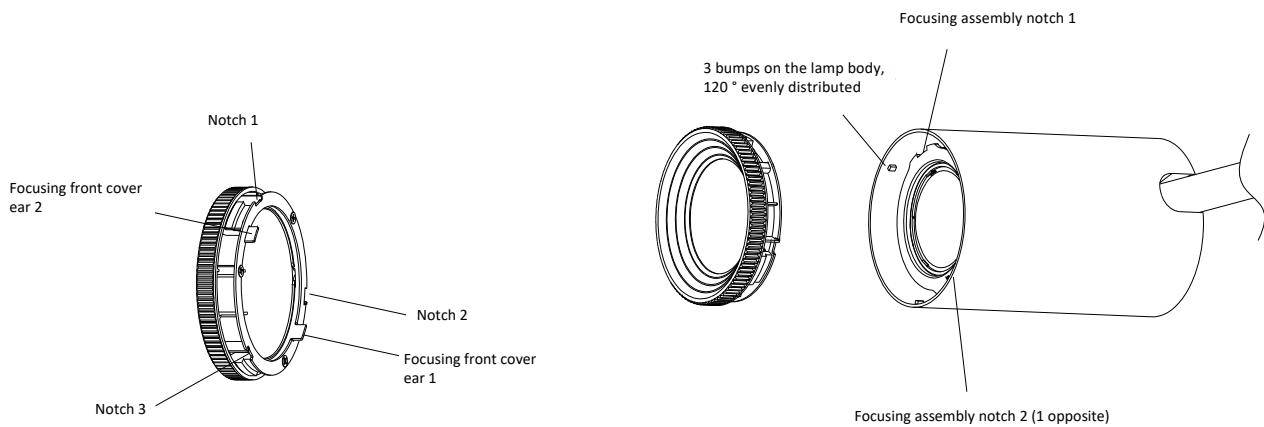
Authorized by WAC Lighting Corporation, USA, holder of the “WAC” trademark.

China Marketing Headquarters: WAC Lighting Technology (Shanghai) Co.

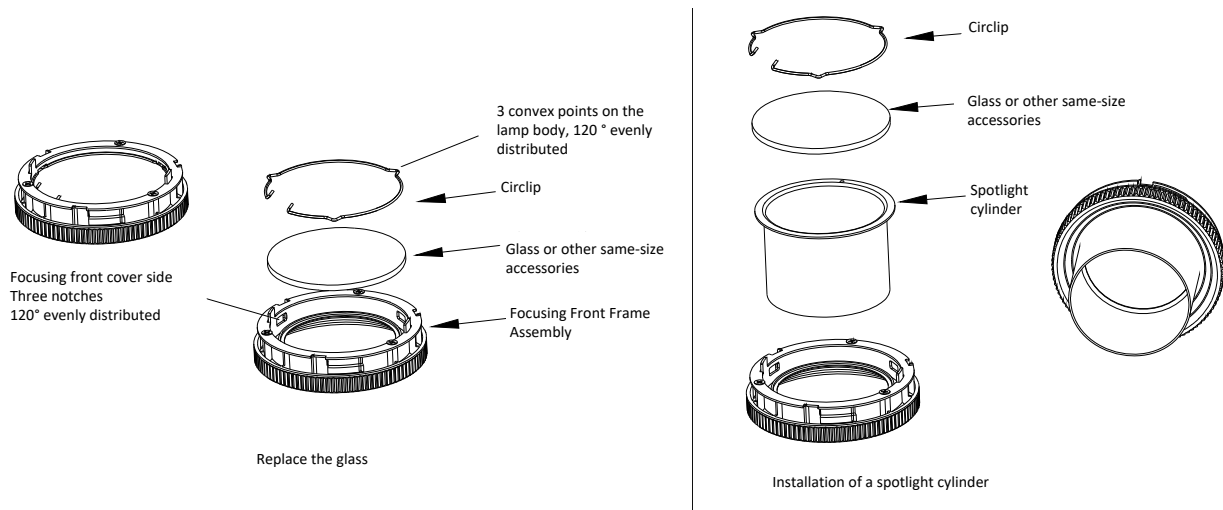
Address: Room 102, No. 14, Lane 299, Bisheng Road, Pilot Free Trade Zone, Shanghai (201204), P.R.C.

China Factory: Manufactured WAC Lighting(Dongguan)Co,Ltd

Address: No. 390, Qingfeng Road, Qingxi Town, Dongguan City, Guangdong Province, 523653, P.R. China



- As shown in the picture below, remove the circlip and place another glass or accessory of the same size into the adjustable front frame assembly. Then place the 3 bends of the circlip into the 3 notches on the side of the adjustable front cover to complete the glass removal and replacement procedure.



- Installation of the spotlight cylinder: Remove the circlip first and install the spotlight cylinder after removing the glass and other accessories. Then place the glass and install the circlip to complete the installation of the spotlight cylinder.

Authorized by WAC Lighting Corporation, USA, holder of the "WAC" trademark.

China Marketing Headquarters: WAC Lighting Technology (Shanghai) Co.

Address: Room 102, No. 14, Lane 299, Bisheng Road, Pilot Free Trade Zone, Shanghai (201204), P.R.C.

China Factory: Manufactured WAC Lighting(Dongguan)Co,Ltd

Address: No. 390, Qingfeng Road, Qingxi Town, Dongguan City, Guangdong Province, 523653, P.R. China